



Minalto - Apartment 3

Church street, St.Mary's

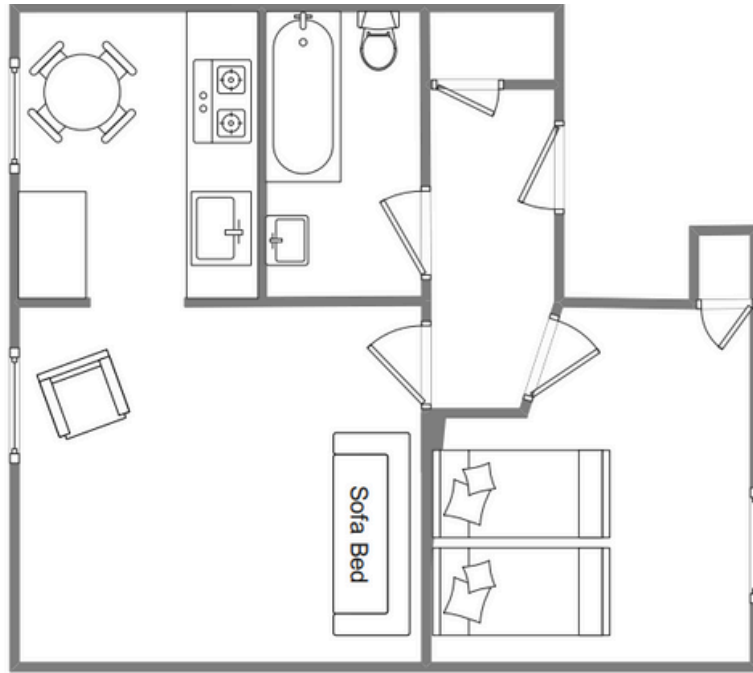


Sleeps 4 | Friday Change over

- Double or twin arrangements
- Bath and shower
- Laundry Facilities
- Close to town centre
- Internet access
- Convenient for beaches

This striking three-storey Victorian town house forms part of a granite terrace built from money recovered from the wreck of the SS Schiller, one of the largest ocean liners of her time. Minalto has been converted into four high quality apartments. Apartment 3 is on the first floor and sleeps two guests in one twin bedroom while two further guests can be accommodated on the sofa bed in the open-plan lounge and dining kitchen area. A modern bathroom with shower over the bath and heated towel rail completes the internal layout where attention to detail and high quality furnishings are obvious throughout. There are also shared laundry facilities on site. Situated a mere five-minute level walk from the heart of Hugh Town, Minalto is also convenient for local beaches and the quay

Layout



Getting to the property

Map of St Marys



Directions from the Quay | Walking time: 6-10 minutes

Head towards the entrance to the quay
Turn left at The Mermaid Inn on to Hugh Street Keep to the left side of the road
Continue along Hugh Street to Bordeaux shop

Cross the road to the Town Hall Walk straight ahead on to Church Street Minalto is about 100 yards on the right Apartment 1 entrance is on the ground floor

What3words:creamed.lamppost.unclaimed

Scilly Self Catering
Lower Strand
Isles of Scilly, TR21 0PS

Enquiries@scillyselfcatering.com
01720 422082
www.scillyselfcatering.com